

Lumbosacral Plexus



SCRUBS

STUDENT COLLABORATIVE RESOURCES FOR UNDERSTANDING AND BRODY SUCCESS

Mission Statement

SCRUBS is a student-driven initiative that aims to develop supplemental resources for current and future cohorts that will pass through Brody. Members of **SCRUBS** participate in a variety of sub-committees working to create resources for students, by students. These resources aim to offer unique perspectives from students that have walked in the same shoes, developing resources that we wish we had been exposed to during our time in the course.

The hope is this organization will become a staple of the Brody student body, exemplifying the unique collaborative community that Brody offers. If this is a mission that aligns with your goals and you have the desire to help those that will come behind you, as well as a goal to leave your mark on Brody as a whole, we invite you to join the team!

Disclaimer

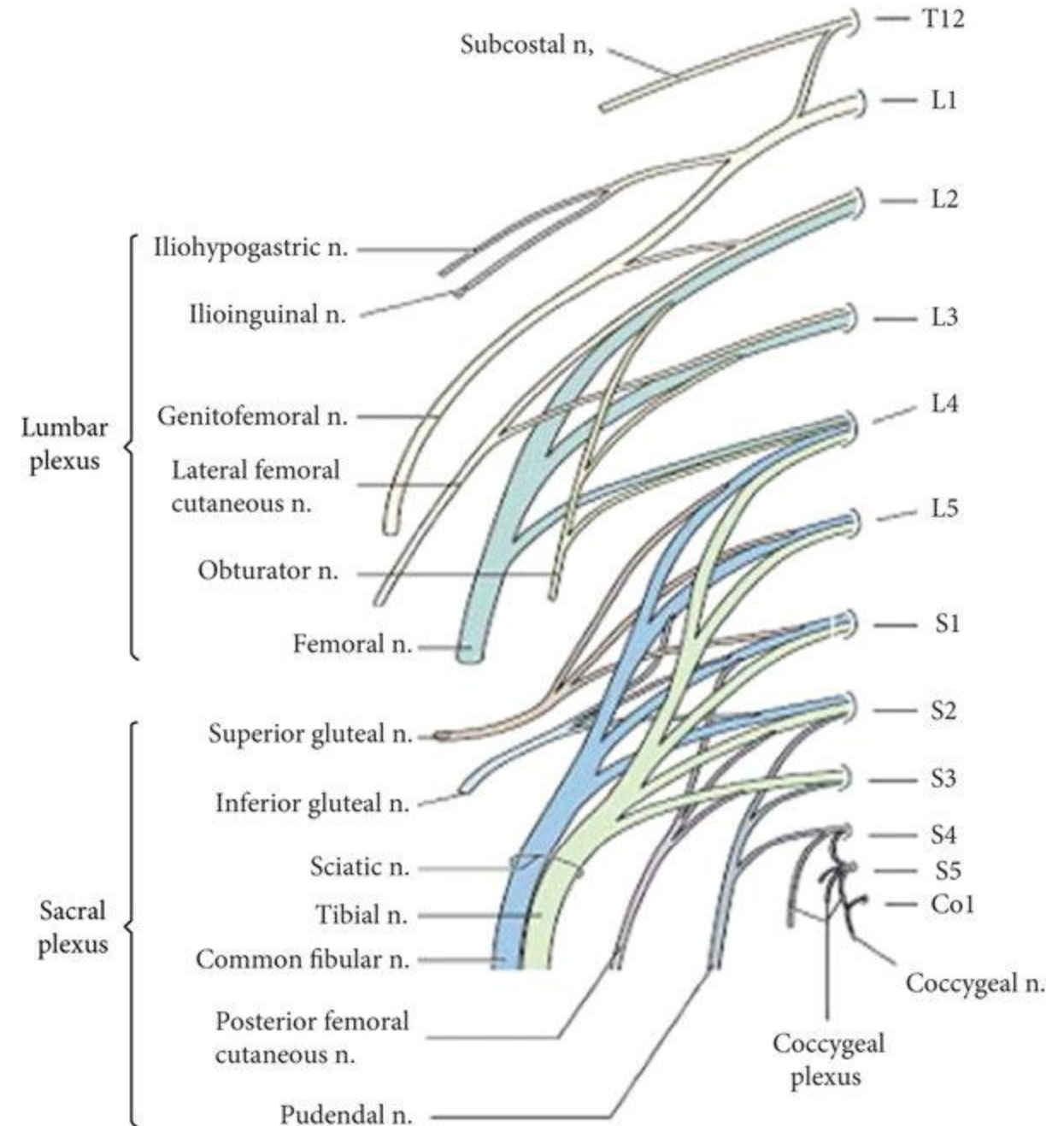
The resources that are included in this document are made by students and not the faculty. As such, there is the possibility for errors in our development, although this is mitigated via a team approach to development with multiple stages of vetting. If there is a contradiction with the coursework presented within your course, please go by the course documents. Additionally, **SCRUBS** aims to supply ***supplemental resources***, however these are in no way replacements to the instruction of the Brody faculty. Use these resources as a supplement, but not as your primary source for course material.

Lumbosacral Plexus

The lumbosacral plexus is composed of the ventral rami of spinal nerves **L₁-S₄**

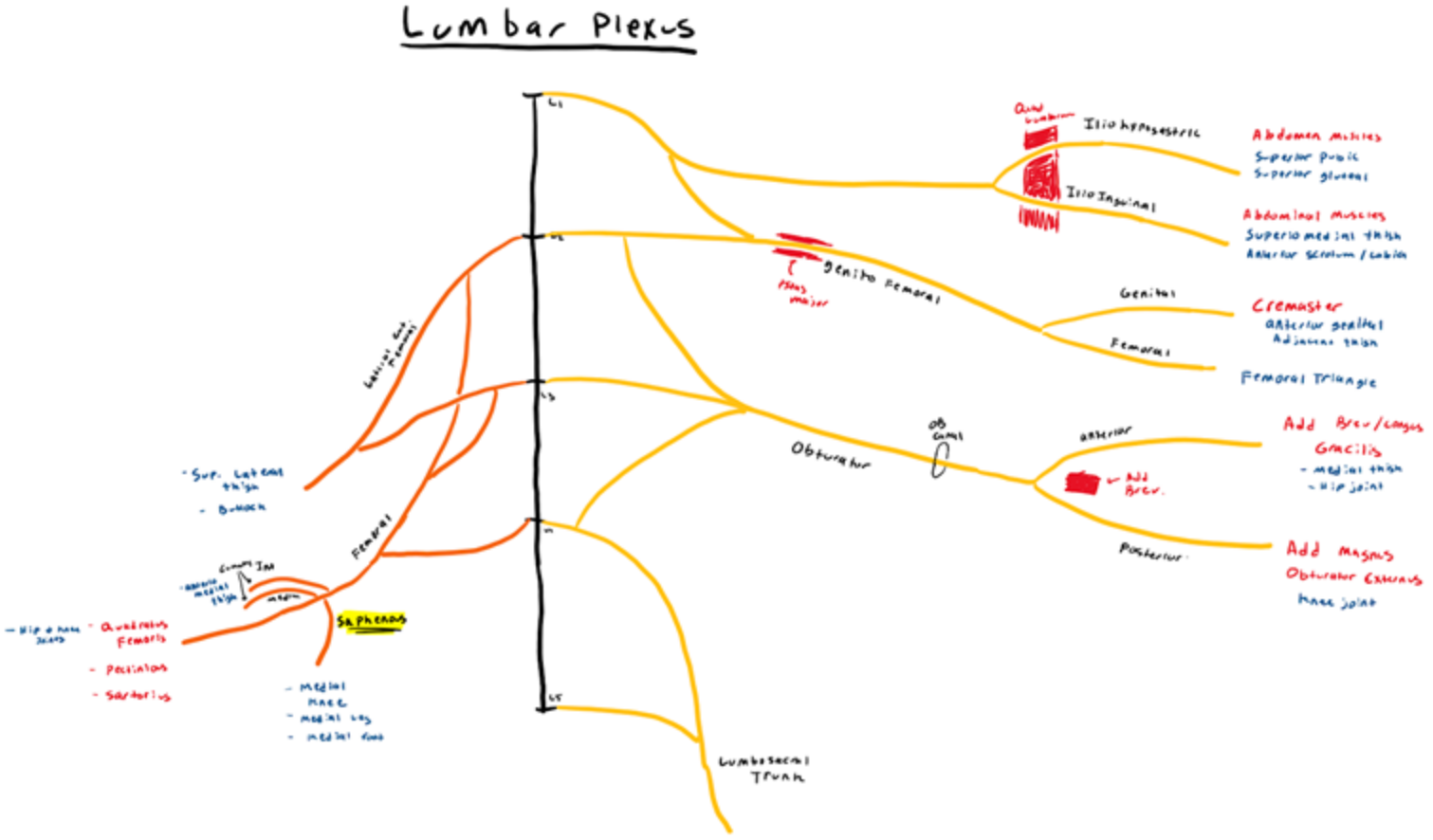
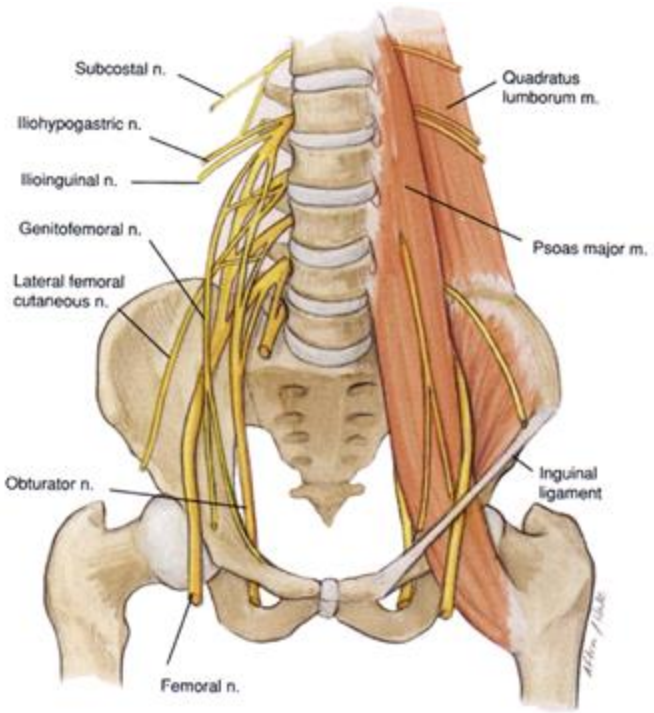
For descriptive purposes, we will break it down into 3 segments:

- Lumbar plexus
- Anterior components of the sacral plexus
- Posterior components of the sacral plexus



Structure of the lumbosacral plexus

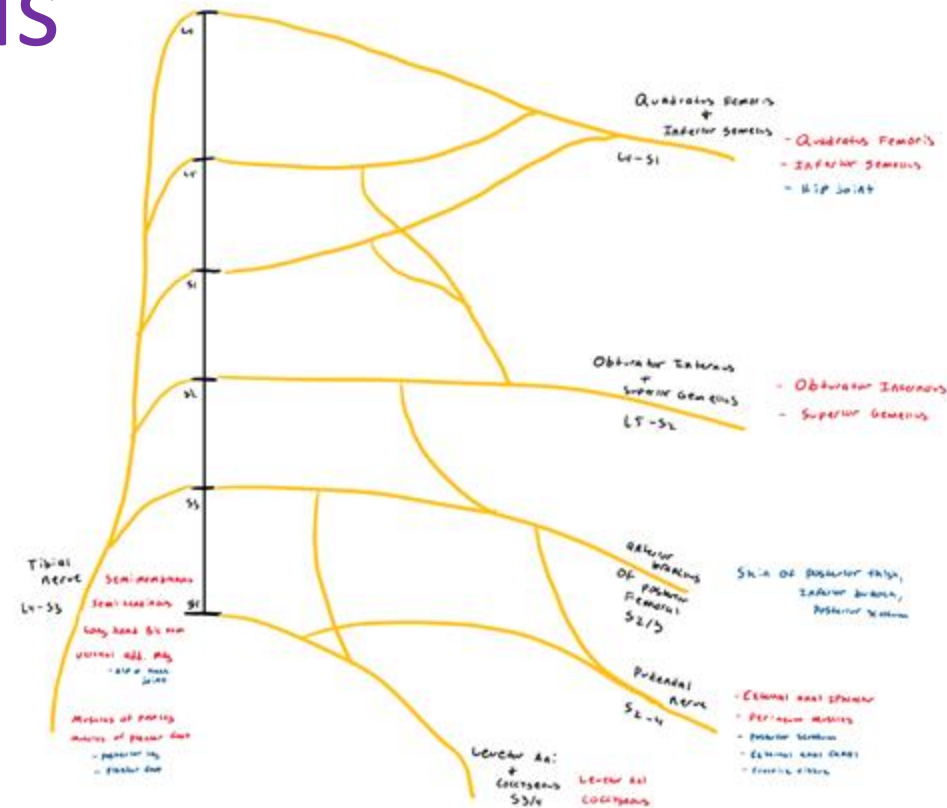
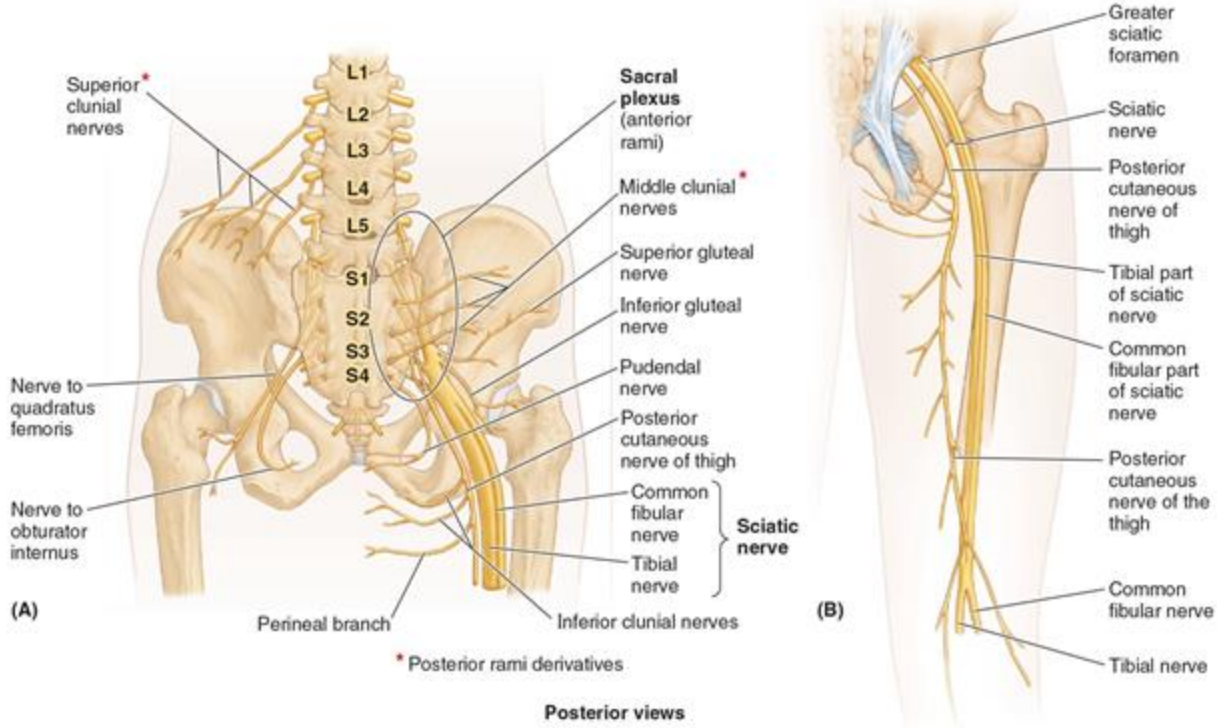
Lumbar plexus



Nerve	Spinal Segments	Target
Iliohypogastric	Anterior Division: L ₁	Abdominal musculature, skin of suprapubic region
Ilioinguinal	Anterior Division: L ₁	Abdominal musculature, skin of upper medial thigh and scrotum
Genitofemoral	Anterior Division: L ₁ -L ₂	Cremaster muscle, scrotum (G), and skin over femoral triangle (F)
Obturator	Anterior Division: L ₂ -L ₄	Majority of the adductor compartment of the thigh
Lateral Femoral Cutaneous	Posterior Division: L ₂ -L ₃	Skin of lateral thigh and buttock
Femoral	Posterior Division: L ₂ -L ₄	Iliacus, Psoas major, muscles of anterior thigh, cutaneous branches

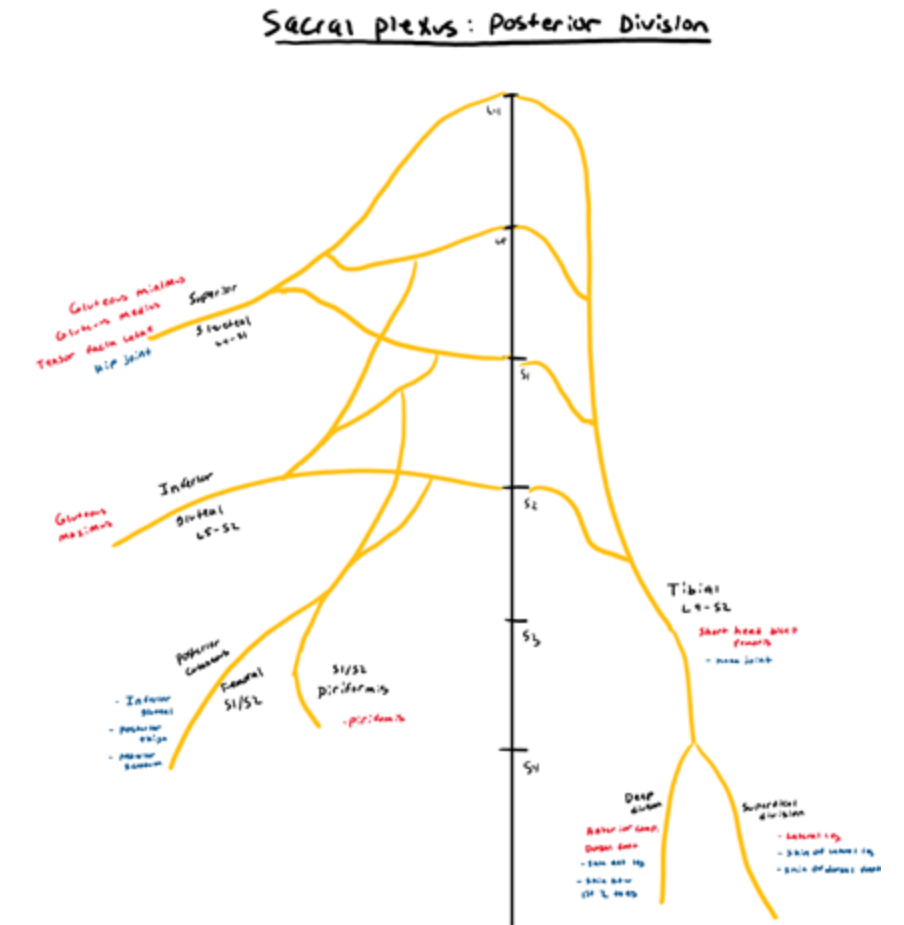
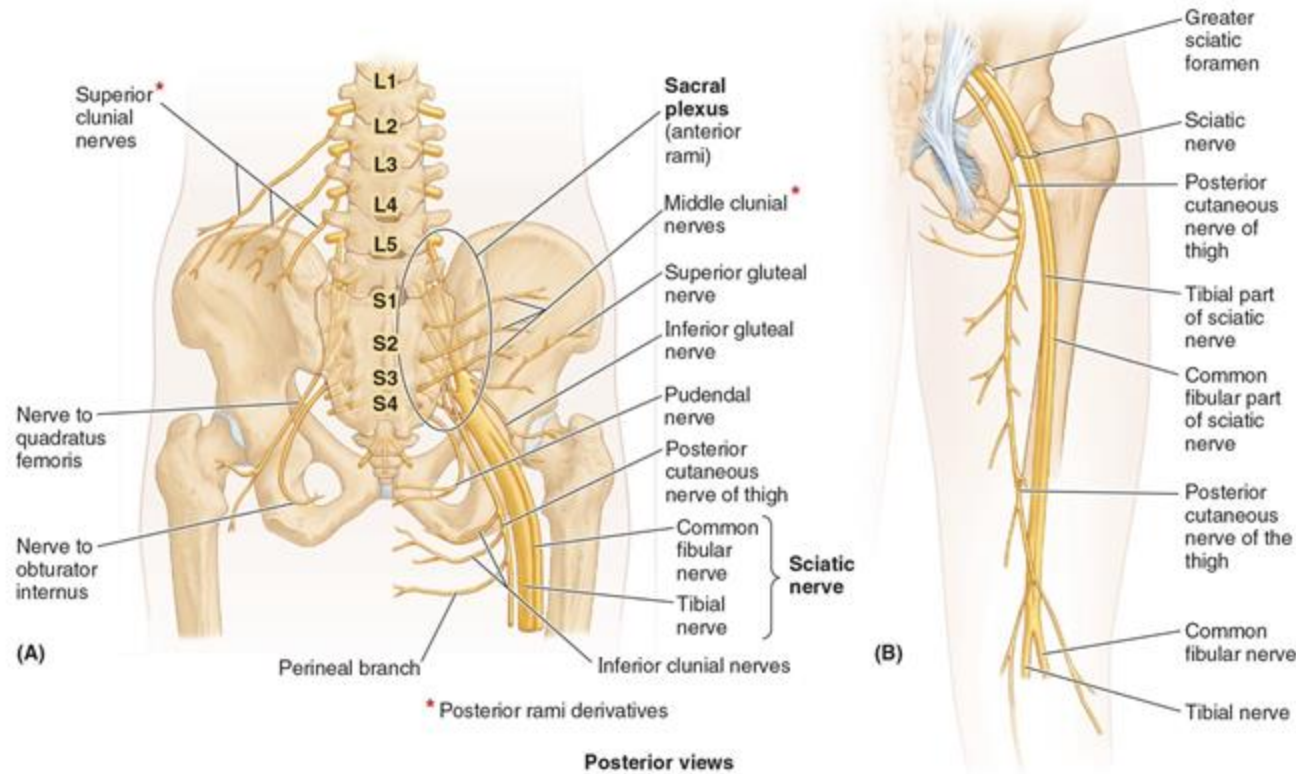
Sacral Plexus - Anterior

Anterior Divisions of Sacral Plexus

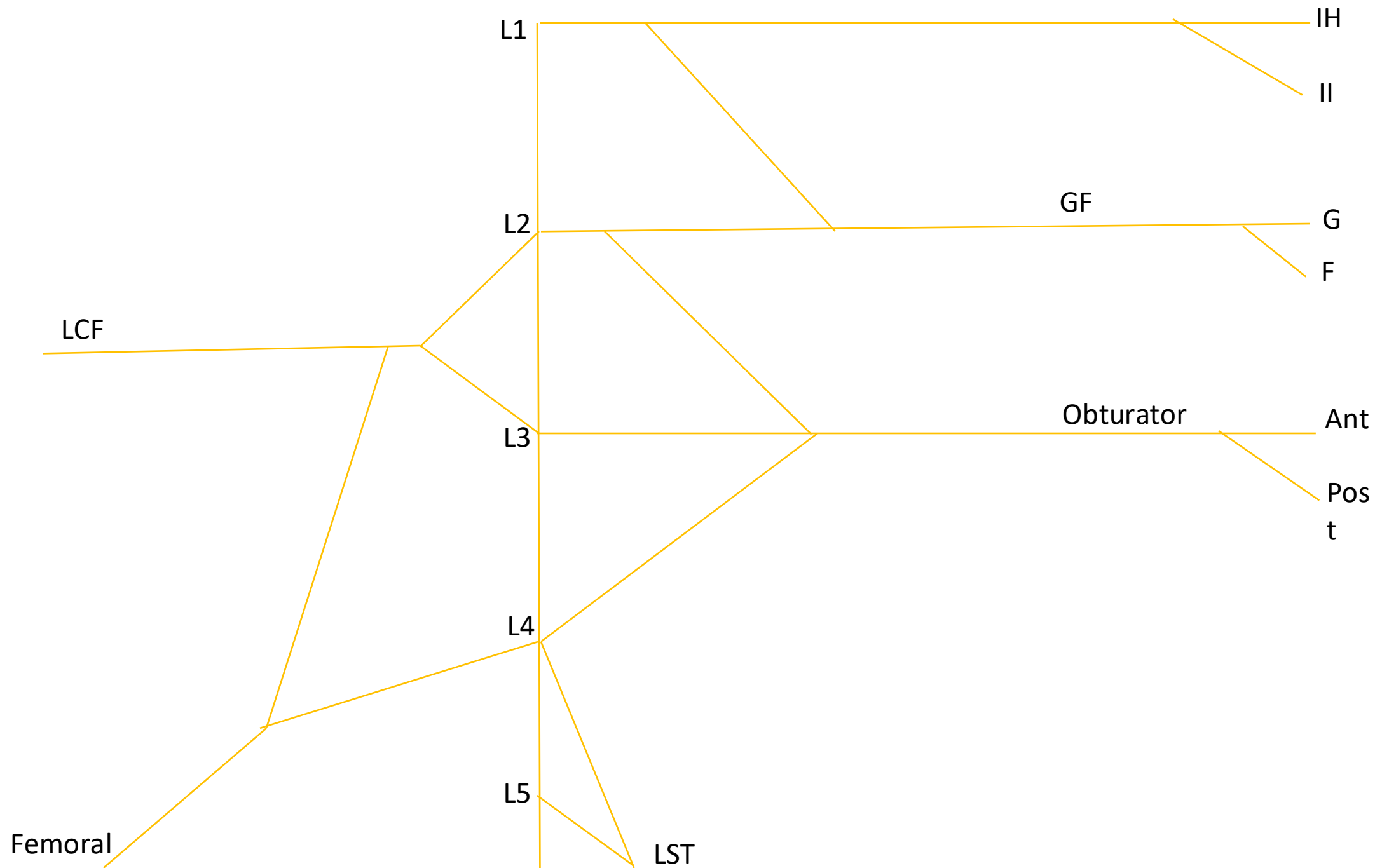


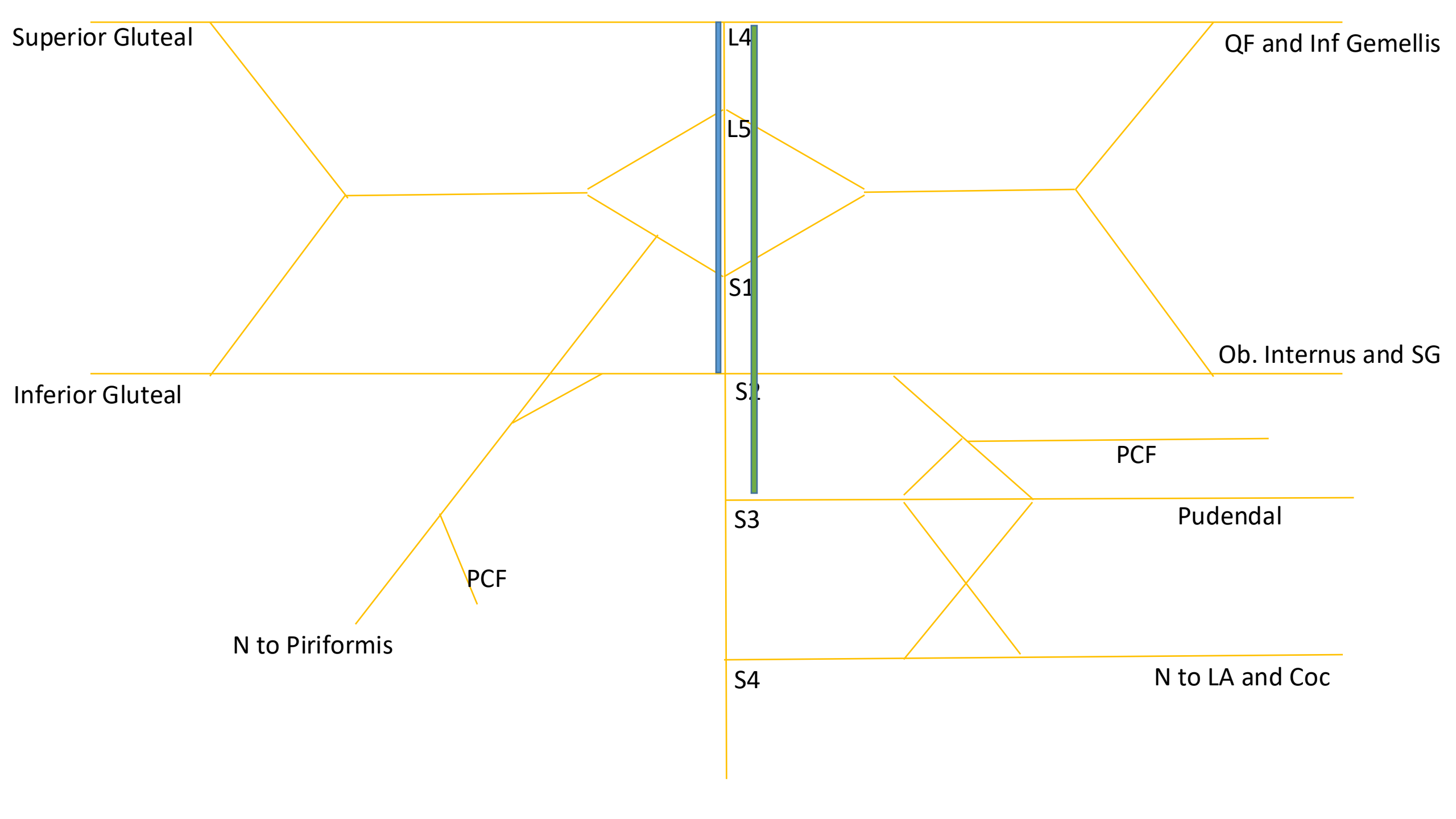
Nerve	Spinal Segment	Target
Inferior Gemellus and Quadratus Femoris	L ₄ ,L ₅ ,S ₁	Inferior gemellus, Quad femoris, articular branch to the hip
Superior Gemellus and Obturator Internus	L ₅ , S ₁ , S ₂	Muscles of the same name
Posterior Femoral Cutaneous	S ₂ , S ₃	Skin of the inferior buttock, posterior scrotum, posterior thigh and knee
Pudendal nerve	S ₂ ,S ₃ ,S ₄	External anal sphincter, urogenital triangle, and more
Levator ani and coccygeus	S ₃ ,S ₄	Pelvic Diaphragm
Tibial (part of sciatic nerve)	L ₄ -S ₃	Most of posterior thigh, all of posterior leg and posterior foot

Posterior Divisions of Sacral Plexus



Nerve	Spinal Segment	Target
Superior Gluteal	L ₄ , L ₅ , S ₁	Gluteus medius, gluteus minimus, tensor fasciae latae
Inferior Gluteal	L ₅ , S ₁ , S ₂	Gluteus maximus
Posterior Femoral Cutaneous	S ₁ , S ₂	Skin of the inferior buttock, posterior scrotum, posterior thigh and knee
Piriformis	S ₁ , S ₂	Muscle of the same name
Common fibular (sciatic cont.)	L ₄ -S ₂	Short head of biceps femoris, lower leg structures





Posterior Division

Anterior Division

